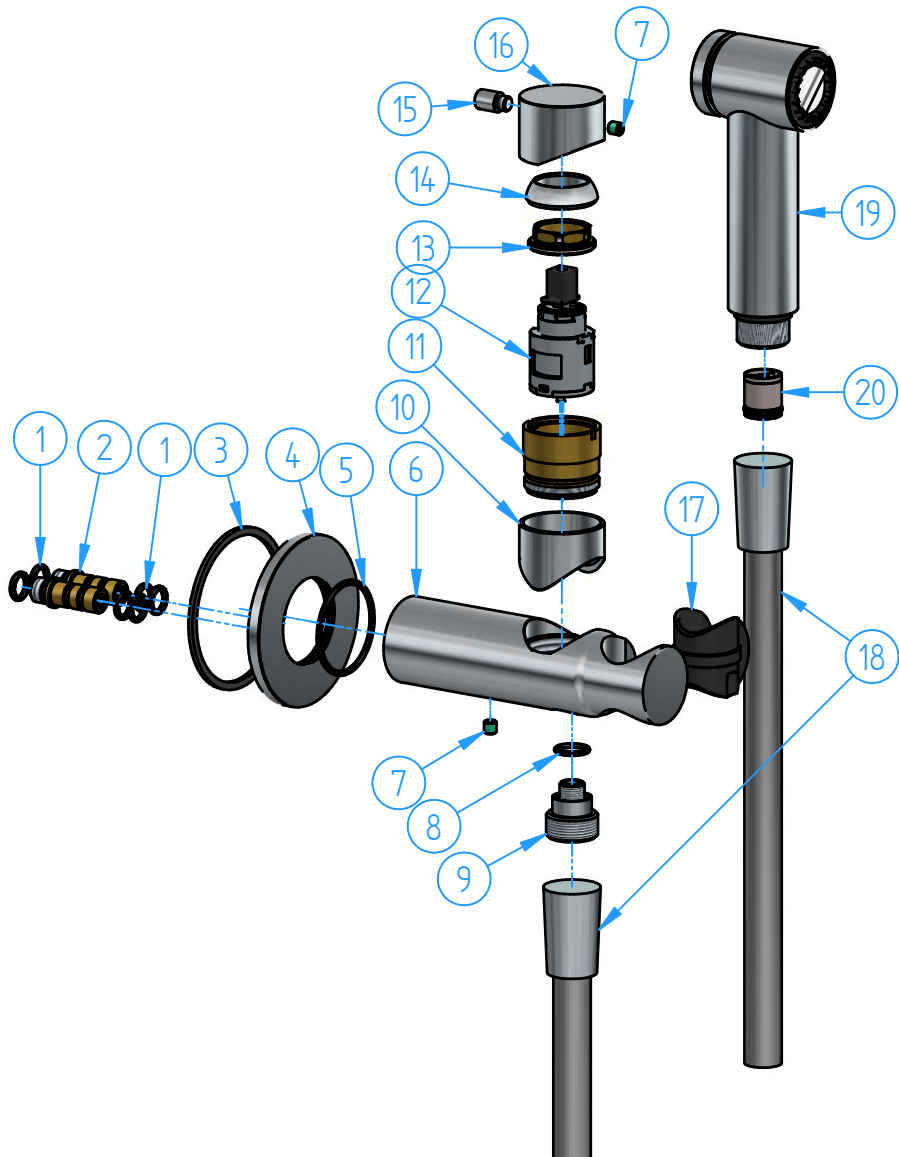
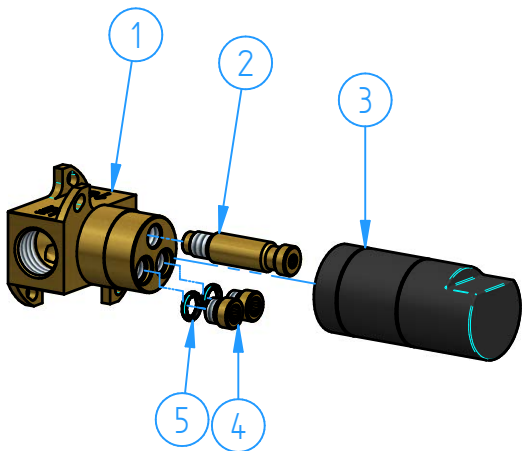







2	KHDS2EXT-00	Trim parts for KHDS2	1
1	HBKDSH2-00	Concealed parts for KHDS2	1
ID Number	Code	Description	Pcs



20	AR077-005	Check valve CV15-FR with flow regulator 2,0 gpm	1
19	FKM18-002	Pull-out hand shower	1
18	M015-001	Flexible hose	2
17	CB077-10	Anti-scratch plastic insert	1
16	L005-MAN	Handle body	1
15	KHDS2-10	Handle pin	1
14	L004-04	Dome	1
13	L004-05	Locking nut for cartridge	1
12	B002-001	Cartridge	1
11	L004-03	Locking nut for cartridge cover	1
10	KHDS2-07	Cartridge cover	1
9	B077-25	1/2" Connection	1
8	B077-05	O.ring 10.82x1.78	1
7	M437-10	Dowel M5x5	2
6	KHDS2-06 rel1	Mixer body	1
5	CB029-04	O.Ring 35x2	1
4	KHDS2-09	Wall flange	1
3	CB031-05 R1	Gasket	1
2	KHDS2-08	Connection	2
1	BR003-11	O.ring 7,65x1,78	6
ID Number	Code	Description	Pcs



5	BR003-11	O.ring 7,65x1,78	2
4	KHDS2-03	Plug	2
3	KHDS2-04	Protection	1
2	KHDS2-02	Mixer pin	1
1	KHDS2-01	Concealed mixer body	1
ID Number	Code	Description	Pcs

			Sheet		1 of 2	
			Scale		1:3	
N°	REVIEW		Date			
Description "Shut-off" kit with mixer, push-button hand shower and 100 cm flexible hose				Material		
				Weight 0 kg		
Code	Date of issue	Chamfers not quoted		Finishing		
KHDS2-00	07/06/2019	0.5x45°	  			
This drawing is property reserved of Hotbath Srl. Without express authorization, the copying, distribution and utilization of this document as well as the communication to others is prohibited						