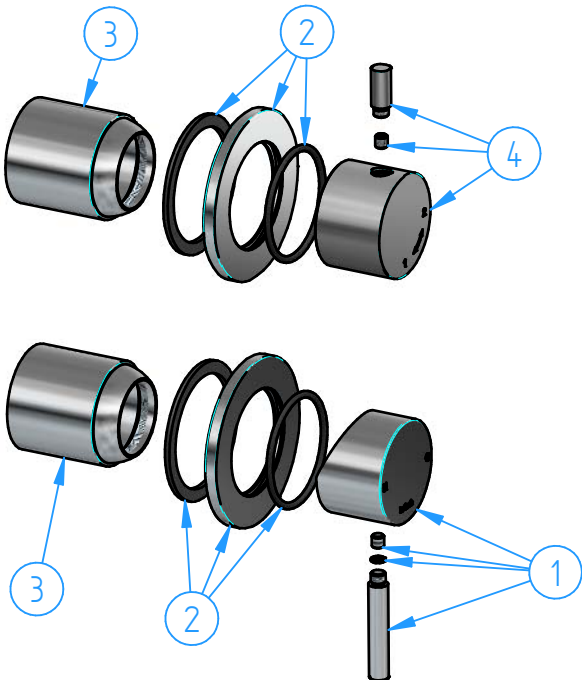
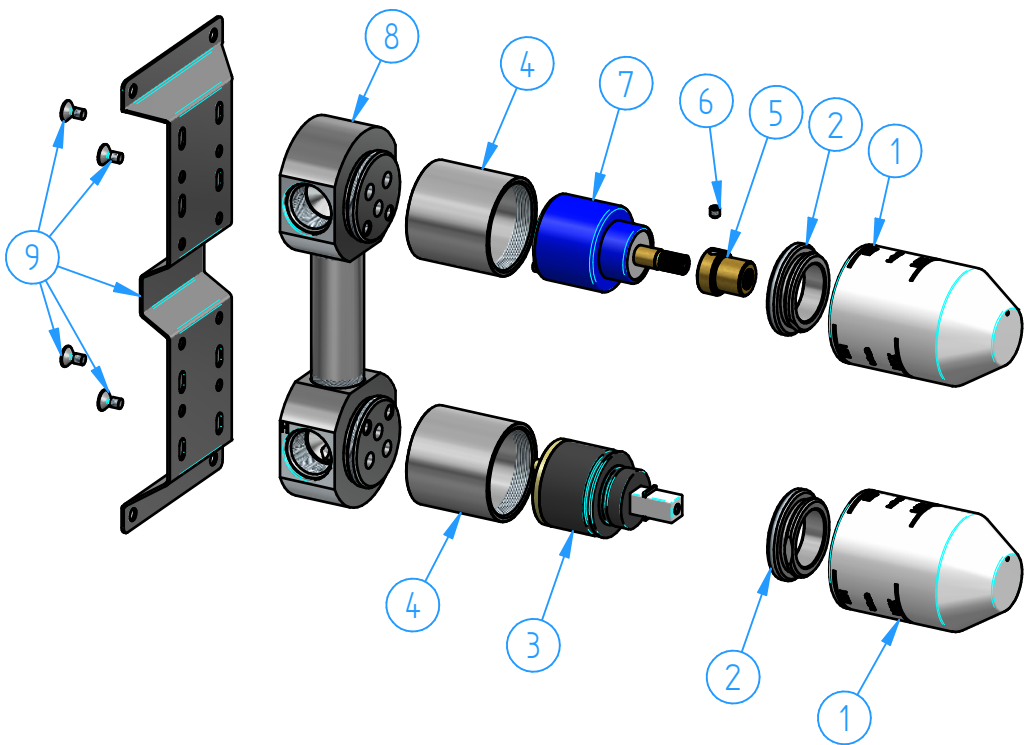


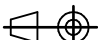
2	AR129EXT-00	Trim parts for AR129	1
1	HBAR129-00	Concealed parts for AR129	1
ID Number	Code	Description	Pcs



4	AR029-001	Diverter handle kit	1
3	AR131-01	Cover	2
2	AR031FL70-00	Wall flange set	2
1	AR031-001	Mixer handle kit	1
ID Number	Code	Description	Pcs



9	AR029-006	Installation set bracket	1
8	AR029-005	Concealed body set	1
7	AR075-001	Diverter ceramic cartridge	1
6	CB004-11	Grub screw M4x5	1
5	AR073-02	Handle adapter	1
4	AR131-02	Cartridge cover	2
3	AR004-010	Ceramic cartridge (0135CF0C-008)	1
2	AR131-03	Locking nut	2
1	AR131-04	Protection cover	2
ID Number	Code	Description	Pcs

			Sheet	1 of 3			
			Scale	1:3			
N°	REVIEW		Date				
Description Concealed shower mixer, with 2-way diverter _____			Material				
			Weight 0 kg				
Code AR129-00	Date of issue 14/12/2023	Chamfers not quoted 0.5x45°	 <div>Finishing</div> <table><tr><td>SM Grinding</td><td>LU Polishing</td><td>CR GN</td></tr></table>		SM Grinding	LU Polishing	CR GN
SM Grinding	LU Polishing	CR GN					
This drawing is property reserved of Hotbath Srl. Without express authorization, the copying, distribution and utilization of this document as well as the communication to others is prohibited							
hotbath italian bathroomware							