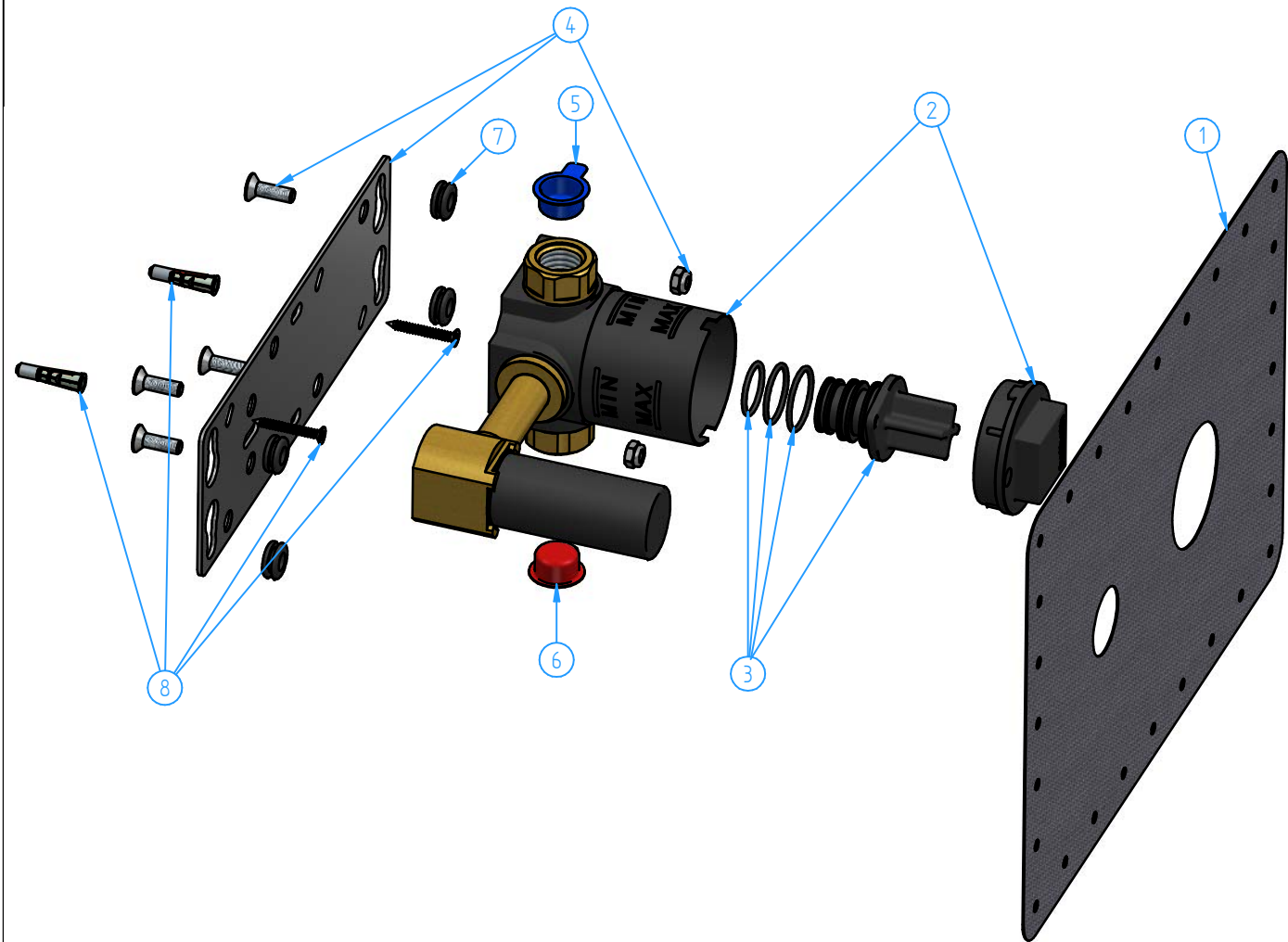
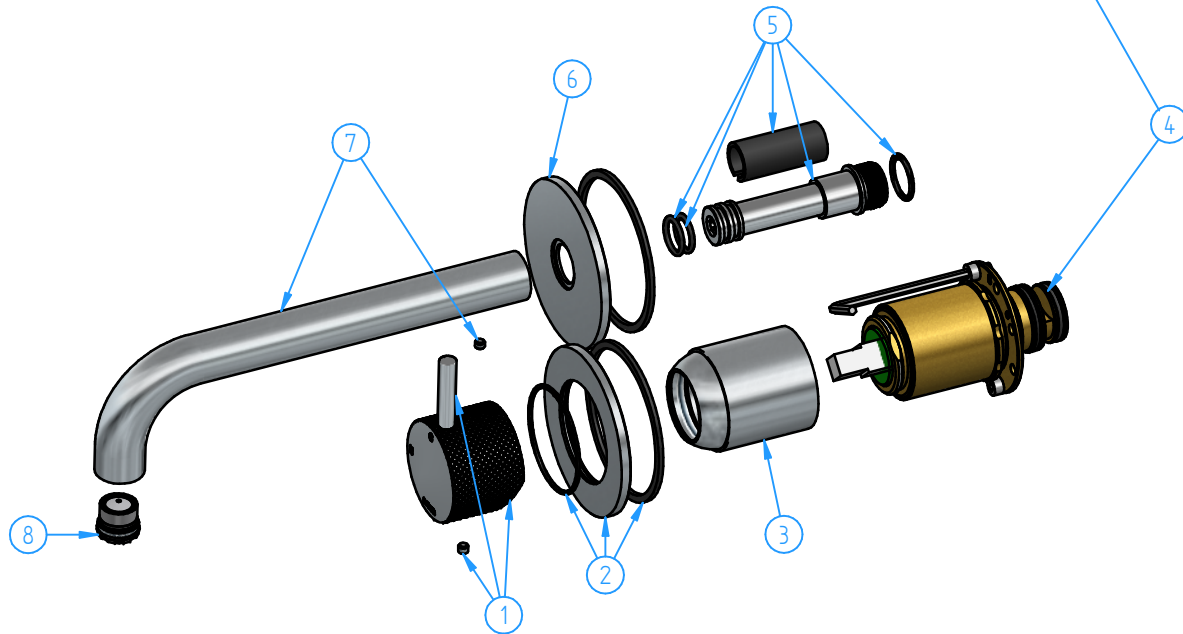
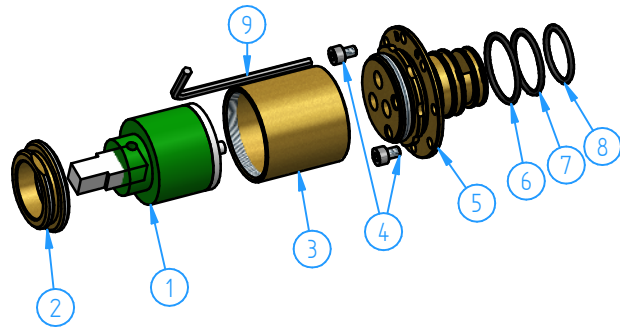


2	CX105EXT18-00	Trim Parts for wall-mounted washbasin mixer, with 18 cm spout	1
1	HBCB105-00	Concealed part for wall-mounted mixers	1
ID Nr	Code	Description	Pcs



8	HBCB105-005	Fixing kit	1
7	HBCB105-004	Shock/noise absorber set	1
6	HBCB105-21	Red plug	1
5	HBCB105-20	Blu plug	1
4	HBCB105-003	Installation flange set	1
3	HBCB105-002	Plug set	1
2	HBCB105-001	Preassembled set for HBCB105	1
1	HBCB105-16	Wall gasket	1
ID Nr	Code	Description	Pcs

9	AC105-11	Allen wrench 3 mm	1
8	AR095-04	O.Ring 20x2	1
7	HBCB105-17	O.ring 23x2	1
6	HBCB105-18	O.ring 25x2	1
5	CB105-02	Cartridge/diverter body	1
4	HBCB105-09	Screw M4x6	2
3	CB031-10	Cartridge cover	1
2	CB003-09	Locking nut	1
1	BR005-001	Ceramic cartridge ø35	1
ID Nr	Code	Description	Pcs



8	CB003-002	Aerator M16,5x1 with flow regulator 1,5 gpm	1
7	CB095-001/18-00	Spout	1
6	CB095FL70-00	Wall flange ø70	1
5	CB005-010	Spout connection set	1
4	CB105-002	Mixer cartridge set	1
3	CB031-11	External shaped ring nut	1
2	CB031FL70-00	Wall flange ø70 (for mixer and diverter)	1
1	CB004-020	Knurled handle	1
ID Nr	Code	Description	Pcs
			Sheet 1 of 3
			Scale 1:3
			Material
			Weight 0 kg
Description			Concealed washbasin mixer, with 18 cm spout
Code	Date of issue	Chamfers not quoted	Finishing
CX105-18-00	25/03/2024	0.5x45°	SM LU CR Grinding Polishing GN
This drawing is property reserved of Hotbath Srl. Without express authorization, the copying, distribution and utilization of this document as well as the communication to others is prohibited			
hotbath italian bathroomware			