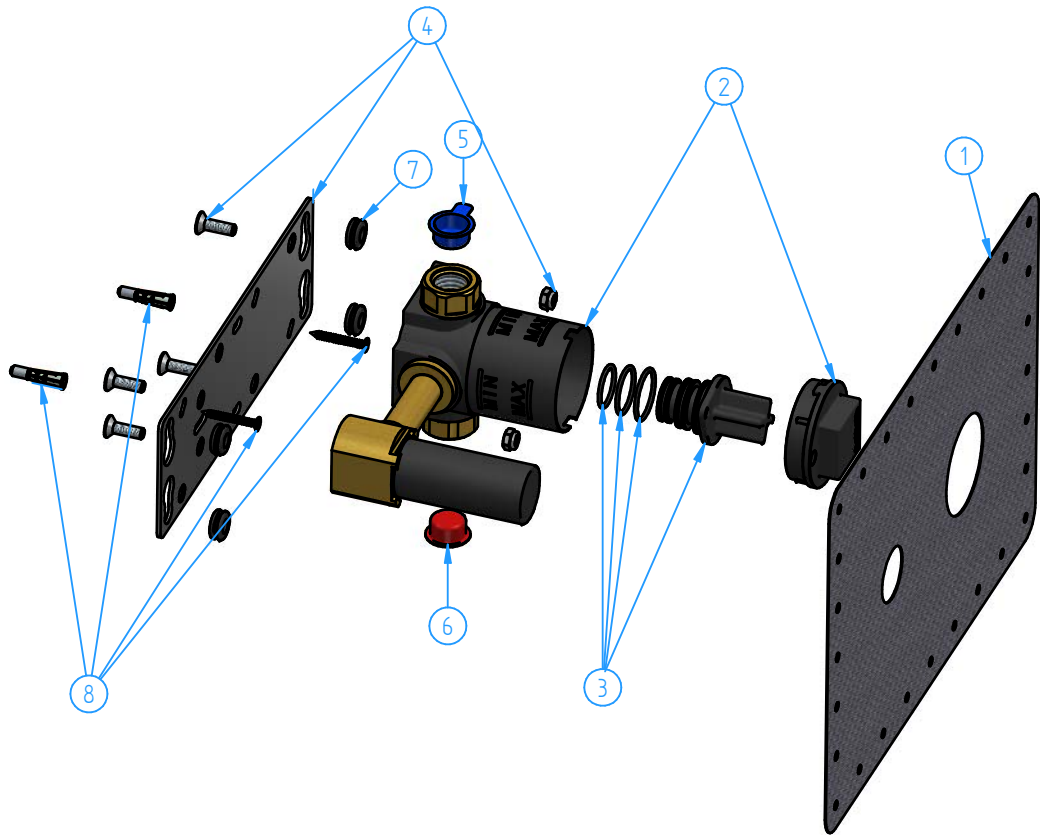
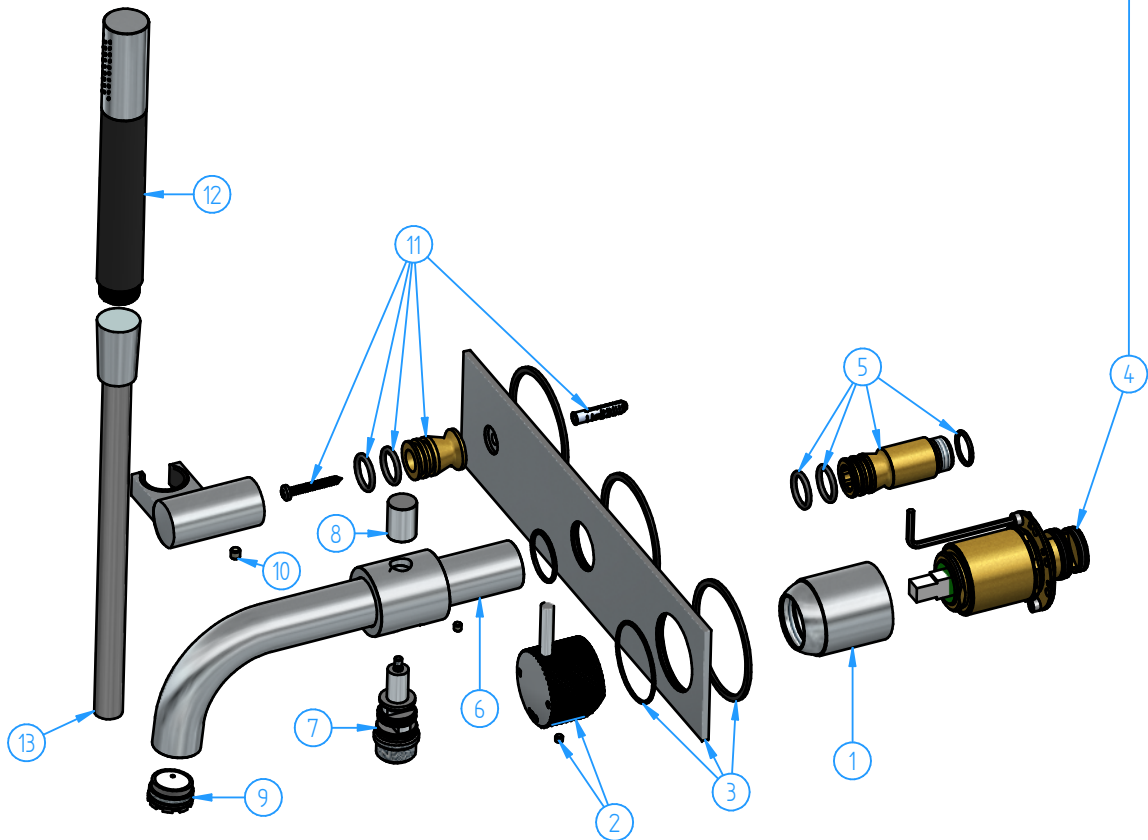
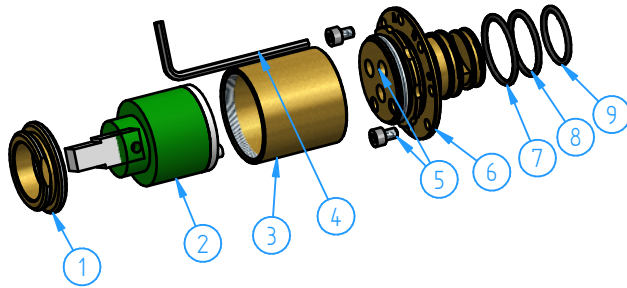


2	CX126EXT-00	Trim Parts for wall-mounted bathtub mixer	1
1	HBCB105-00	Concealed part for wall-mounted mixers	1
ID Nr	Code	Description	Pcs



8	HBCB105-005	Fixing kit	1
7	HBCB105-004	Shock/noise absorber set	1
6	HBCB105-21	Red plug	1
5	HBCB105-20	Blu plug	1
4	HBCB105-003	Installation flange set	1
3	HBCB105-002	Plug set	1
2	HBCB105-001	Preassembled set for HBCB105	1
1	HBCB105-16	Wall gasket	1
ID Nr	Code	Description	Pcs

9	AR095-04	O.Ring 20x2	1
8	HBCB105-17	O.ring 23x2	1
7	HBCB105-18	O.ring 25x2	1
6	CB105-02	Cartridge/diverter body	1
5	HBCB105-09	Screw M4x6	2
4	AC105-11	Allen wrench 3 mm	1
3	CB031-10	Cartridge cover	1
2	BR005-001	Ceramic cartridge ø35	1
1	CB003-09	Locking nut	1
ID Nr	Code	Description	Pcs



13	M015-00	Flexible hose	1
12	M352-00	Hand shower	1
11	CB026-005	Fixing kit for hand shower support	1
10	CB026-004	Shower support	1
9	B077-001	Flow guide (Cache STD)	1
8	BU026-07	Diverter knob	1
7	CB026-002	Diverter	1
6	CB026-003	Spout set, with diverter body	1
5	CB026-007	Spout connector set	1
4	CB105-002	Mixer cartridge set	1
3	CB26FL-00	Wall flange set	1
2	CB031-020	Knurled handle	1
1	CB031-11	External shaped ring nut	1
ID Nr	Code	Description	Pcs

			Sheet	1 of 3
			Scale	1:4
N°	REVIEW		Date	
Description	Concealed bathtub mixer, with hand shower and flexible hose			Material
				Weight 0 kg
Code CX126-00	Date of issue 24/11/2023	Chamfers not quoted 0.5x45°		
This drawing is property reserved of Hotbath Srl. Without express authorization, the copying, distribution and utilization of this document as well as the communication to others is prohibited				