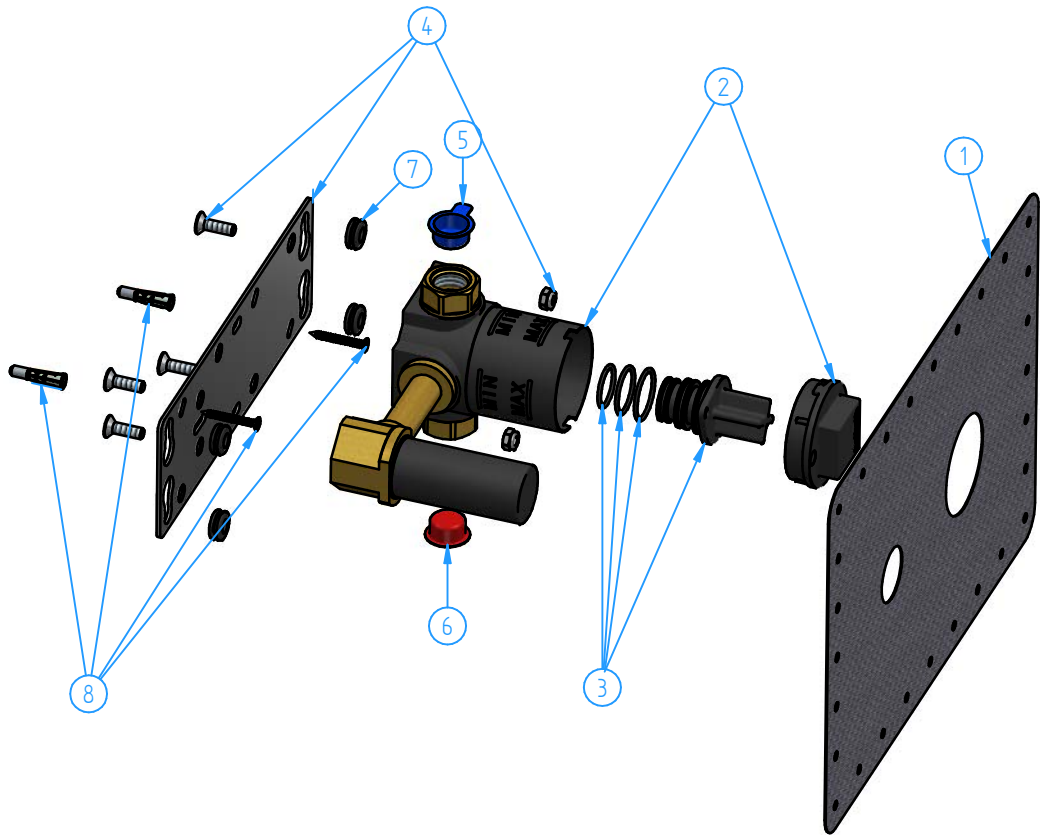
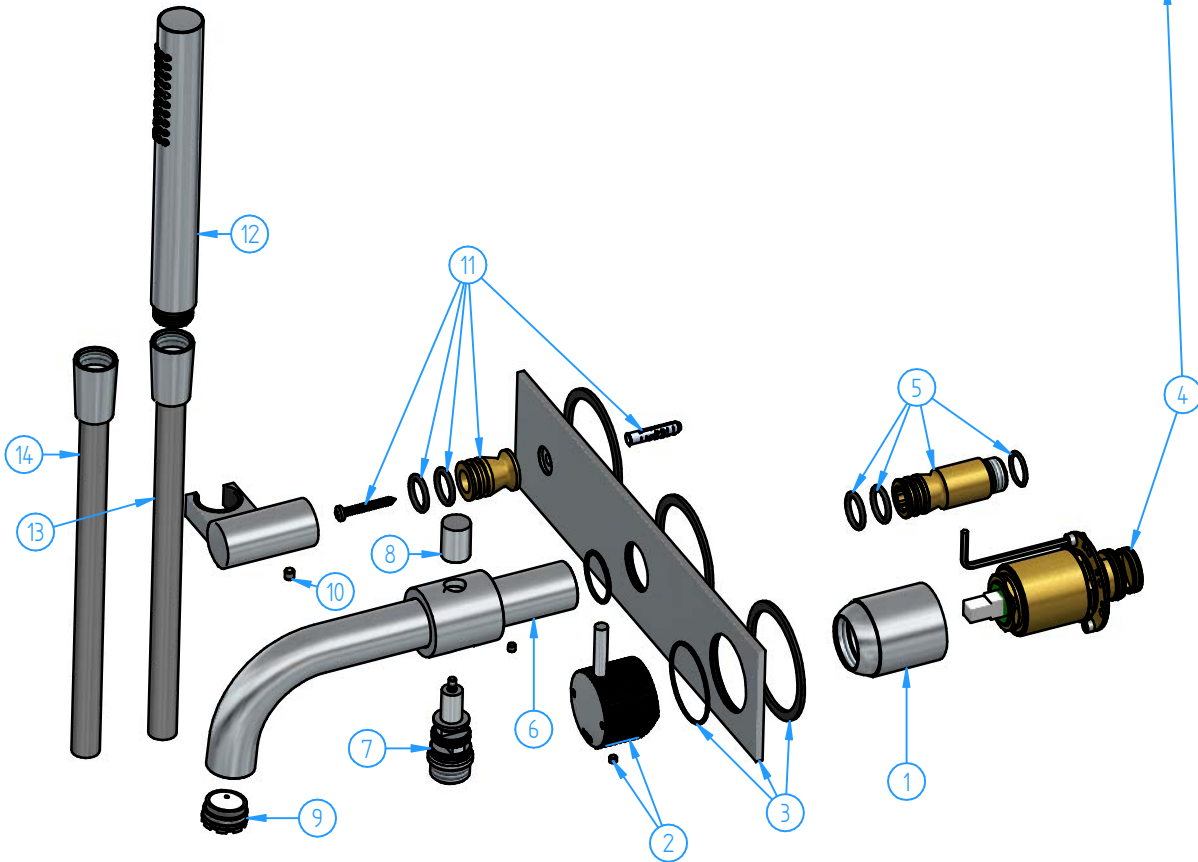
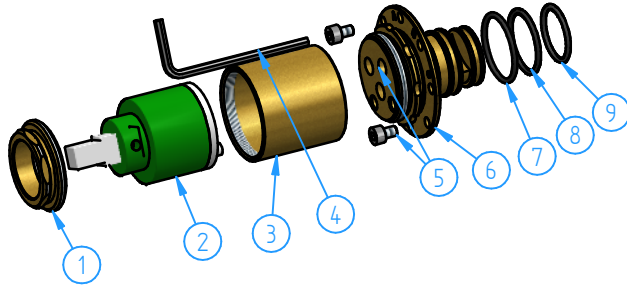


2	CX127EXT-00	Trim Parts for wall-mounted bathtub mixer	1
1	HBCB105-00	Internal part for wall-mounted mixers	1
ID Nr	Code	Description	Pcs



8	HBCB105-005	Fixing kit	1
7	HBCB105-004	Shock/noise absorber set	1
6	HBCB105-21	Red plug	1
5	HBCB105-20	Blu plug	1
4	HBCB105-003	Installation flange set	1
3	HBCB105-002	Plug set	1
2	HBCB105-001	Preassembled set for HBCB105	1
1	HBCB105-16	Wall gasket	1
ID Nr	Code	Description	Pcs

9	AR095-04	O.Ring 20x2	1
8	HBCB105-17	O.ring 23x2	1
7	HBCB105-18	O.ring 25x2	1
6	CB105-02	Cartridge/diverter body	1
5	HBCB105-09	Screw M4x6	2
4	AC105-11	Allen wrench 3 mm	1
3	CB031-10	Cartridge cover	1
2	BR005-001	Ceramic cartridge ø35	1
1	CB003-09	Locking nut	1
ID Nr	Code	Description	Pcs



14	M017-00	Flexible hose (for finishes : BBP/BCP and TB in Guy range)	1
13	M015-00	Flexible hose	1
12	M354-00	Hand shower	1
11	CB026-005	Fixing kit for hand shower support	1
10	CB026-004	Shower support	1
9	B077-001	Flow guide (Cache STD)	1
8	BU026-07	Diverter knob	1
7	CB026-002	Diverter	1
6	CB026-003	Spout set, with diverter body	1
5	CB026-007	Spout connector set	1
4	CB105-002	Mixer cartridge set	1
3	CB26FL-00	Wall flange set	1
2	CB031-020	Knurled handle	1
1	CB031-11	External shaped ring nut	1
ID Nr	Code	Description	Pcs

			Sheet	1 of 3
N°	REVIEW		Date	Scale 1:4
Description	Concealed bathtub mixer, with hand shower and flexible hose			Material
			Weight	0 kg
Code	Date of issue	Chamfers not quoted	Finishing	
CX127-00	24/11/2023	0.5x45°	SM Grinding	LU Polishing
This drawing is property reserved of Hotbath Srl. Without express authorization, the copying, distribution and utilization of this document as well as the communication to others is prohibited				CR GN
				hotbath italian bathroomware